

SPDI533-01

PIN Photo Diode

The SPDI533-01 is a high-output, high-speed silicon PIN photodiode mounted in a plastic package.

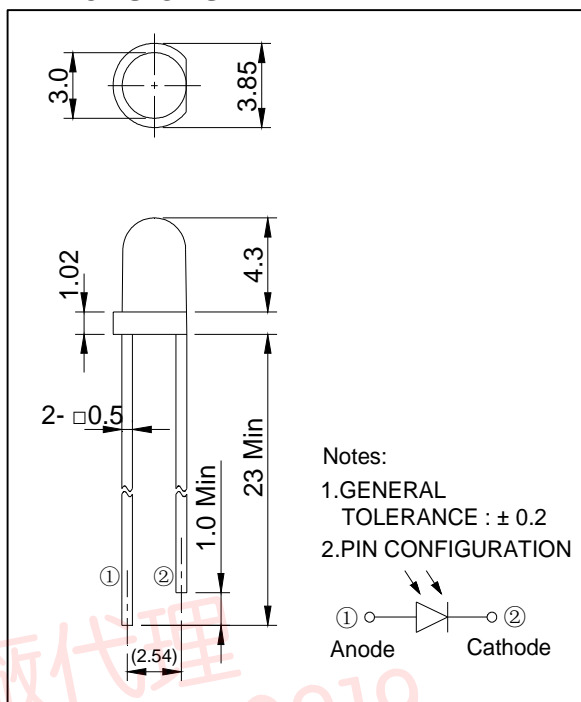
Features

- High-Speed Response
- Clear Plastic Package
- Low Profile

Application

- Optical Detectors
- Optical Switches

Dimensions (Unit:mm)



MAXIMUM RATINGS (Ta= 25°C)

| Item | Symbol | Rating | Unit |
|--------------------------|--------|----------|------|
| Reverse Voltage | V_R | 30 | V |
| Power Dissipation | P_D | 30 | mW |
| Operating Temperature | Topr. | -25~+85 | °C |
| Storage Temperature | Tstg. | -40~+100 | °C |
| Soldering temperature *1 | Tsol. | 260 | °C |

*1. Lead Soldering Temperature(3mm from case for 5sec)

ELECTRO- OPTICAL CHARACTERISTICS (Ta= 25°C)

| Items | Symbol | Condition | Min. | Typ. | Max. | Unit |
|-----------------------|----------------|------------------------------|------|----------|------|---------------|
| Open circuit voltage | V_{OC} | $E_V=1000\text{Lux}^{*2}$ | | 0.44 | | V |
| Short circuit current | I_{SC} | | 38 | 48 | | μA |
| Dark current | I_D | $V_R=10\text{V}$ | | | 10 | nA |
| Capacitance | C_t | $V=0\text{V}, f=1\text{MHz}$ | | 13.5 | | pF |
| Spectral sensitivity | λ | | | 450~1100 | | nm |
| Peak wavelength | λ_p | | | 940 | | nm |
| Half angle | $\Delta\theta$ | | | ± 21 | | deg. |

*2. Irradiance by CIE standard light source A (2856K tungsten lamp)

SPDI533-01

